

Key Upgrades for your Trine Labelling System

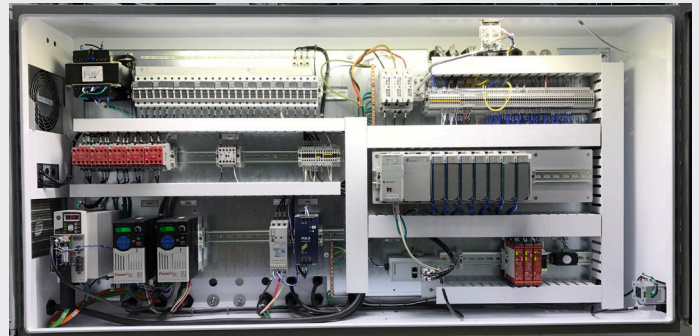
Trine 4400 and 4500 Upgrades

- Allen-Bradley electrical controls package
- Servo label registration system
- Single or dual powered unwind systems
- Variable Frequency Drive (VFD) for ERS
- Change parts
- Touchscreen
- Main drive dual chain
- Enhanced safety features
- Dual vacuum system
- Auto lube system
- Direct drive conveyor package
- Glue tank package
- Web tracker system



Trine 6500 Upgrades

- Allen-Bradley electrical controls package
- Glue tank package
- Servo label registration system (non-PLC)
- Quick-change change parts – Mark II
- Web tracker system
- Power unwind package
- Dual vacuum system
- Enhanced safety features and guarding



Trine 6700 Upgrades

- Allen-Bradley electrical controls package
- Servo label registration system
- Power unwind package
- Touchscreen
- Glue tank package
- Quick-change change parts – Mark II
- Dual vacuum system
- Web tracker system
- Enhanced safety features



Durability

- 40 Chain Upgrade for Conveyor Drive – 4000 Series and Model 6700
- Air Conditioning Unit
- Auto Lube System - PLC
- Auto Lube System - Relay
- Direct Drive Conveyer
- Dual Chain Drive System for Main Drive – 4000 Series and Model 6700

Performance

- 2 Finger to 3 Finger Roll Chuck (Only) Assembly
- Hand Crank to 3 Finger Roll Chuck with Brake, Dual Assembly
- 8 Wire Glue Roller Kit – Models 5500 and 6500
- Automated Vacuum Drum Cleaning Kit
- 11 Wire Glue Roller Kit – 4000 Series
- Clear Label Sensor Kit (EP2)
- Discharge Stabilizer Belt
- Dual 24" or 48" Vertical Powered Unwind
- Dual Vacuum System
- Electronic Web Tracker Assembly
- Feedscrew Drive System – Models 4400 and 4500
- Low Label Alarm Kit
- Luminescent Label Registration Scanner Kit
- Product Flow Control Kit – Model 4400
- Reverse Eye-Mark Registration Kit
- Servo Label Registration System - PLC
- Servo Label Registration System - Relay
- Single 24" or 48" Vertical Powered Unwind
- Single Horizontal Roll Stand with Brake System – Models 4400 and 5500

Obsolescence

- AC Tech Kit (Replacement for Mitsubishi ERS VFD)
- EMP Transmission to Servo
- ERS to Servo
- FX to FX3U PLC – 4000 Series and Model 6700
- FX2N to FX3U PLC
- Glue Return Tube – Models 6500 and 6700
- AltaBlue™ Glue Tank Package - PLC (Replacement for Slautterback®)
- AltaBlue™ Glue Tank Package - Relay (Replacement for Slautterback®)
- Main Motor DC to AC Retrofit – for Relay Machine

- ProBlue® Glue Tank (Replacement for Slautterback®)
- TCP to CTC Touchscreen or CTC to CTC Touchscreen
- Complete Allen-Bradley controls upgrade

Utility

- Allen-Bradley Touchscreen
- Allen-Bradley Variable Frequency Drive (0-10 VDC Reference)
- Conveyor Extension – 26" for 4000 Series or Custom Built
- Glue Wheel Scraper Kit – 4000 Series and Model 6700
- Light Stack Kit
- Stainless Steel Enclosure Option

Safety

- Category 3 Compliance
- CE Compliance
- Gull Wing Replacement Door Set - Feedscrew
- Gull Wing Replacement Door Set - Non-Feedscrew
- Upper Safety Guarding

Cutter Assemblies

- 4000 Series Cutter (New or Rebuilt) – Model 4800 New Only
- 6700 2 Station Cutter (New or Rebuilt)
- 6700 3 Station Cutter (New or Rebuilt)
- 6700 4 Station Cutter (New or Rebuilt)
- SP2 2 Station 7" Blade (New or Rebuilt) – Models 5500 and 6500
- SP2 3 Station 7" Blade (New or Rebuilt) – Models 5500 and 6500
- SP2 4 Station 7" Blade (New or Rebuilt) – Models 5500 and 6500
- SP3 2 Station 8 3/4" Blade (New) – Models 5500 and 6500
- SP3 3 Station 8 3/4" Blade (New) – Models 5500 and 6500
- SP3 4 Station 8 3/4" Blade (New) – Models 5500 and 6500

Cutter Parts

- 4000 Series Spline Receiver Repair Kit
- Cutter Bearing Kits
- Rotary Blade (Film)
- Rotary Blade (Paper/Foam)
- Stationary Blade

Glue Wheel Assemblies

- 8 Wire Glue Wheel Assembly – Models 5500 and 6500
- 11 Wire Glue Wheel Assembly – 4000 Series
- Glue Wheel Assembly (New or Rebuilt*)

*Rebuilt available with customer supplied core unit

Accraply

Trine

Stanford

Graham | Sleeveit

Harland

Accraply
3580 Holly Lane North
Plymouth MN 55447-1269 USA

t. +1 (909) 605-8200
t. 1 (800) 423-6539
accraply.com

barrywehmler
bw
betterworld